



CUSTOM

Thermal Label Printer

User Manual

For Printer Driver Download link, go to:

<http://www.custom.co.nz/product-manuals-drivers>



USB Connection Only

Add paper/label roll to printer:

Supplied with paper/label roll circle guides for rolls that are smaller than the width of the printer. When using full width paper/label roll guides are not required.

Indicator light Instructions:

Light Led Status	Printer Status
Light off	Printer is off
Blue Light	Printer is on and working correctly
Flashing Red Light	The printer is powered on but is out of paper or the label paper detection is abnormal

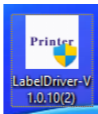
Button Instructions:

Power switch	Printer Status
Power on and press FEED button one time	Feeds one label
Power on and hold press FEED button 5 to 6 seconds until 2 beeps	Label paper calibration and one label paper feeding
While power is off, press and hold FEED button, turn on the printer, and release the FEED button when flashing red light	Print self-test page

Driver Installation on Windows by USB Connection

1.Connect with Windows via USB interface, turn on the power of printer.

2.Double click "LabelDriver".



3.Click "Next".



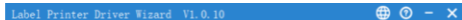
Install printer driver

Remove printer driver

Next

Cancel

4.Choose "USB" and Click "Next".



Designated port

USB

Network

Bluetooth

Parallel

Serial

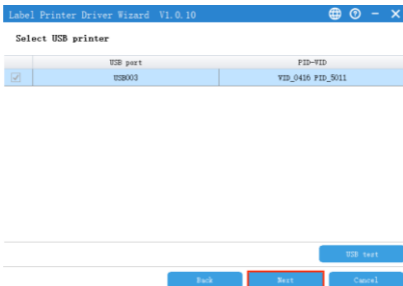
Customization

Back

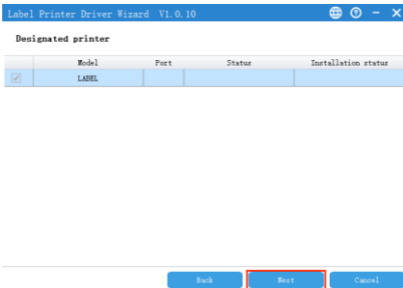
Next

Cancel

5. Click "Next".



6. Click "Next".



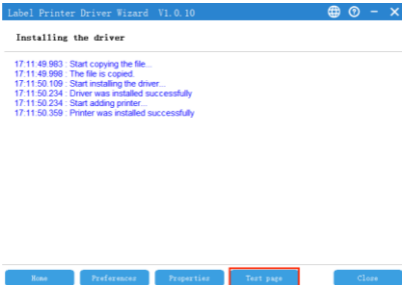
7. Click "Next".



8. Click "Next".



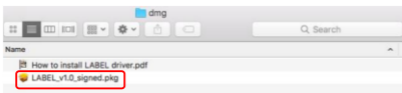
9. Once installed successfully, then you can print test a label.



Note: If the printer prompts "Printing Error" return to the "Port" option, select USB001, or USB002, or USB003.....and test it again.

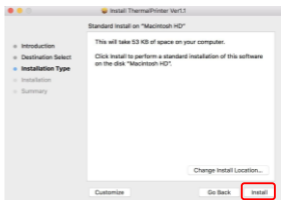
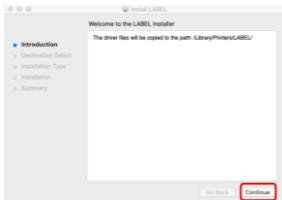
Driver Installation on Mac by USB Connection

1. Double click LABEL .dmg.
2. Double click "LABEL_V1.0_signed.pkg" to install the driver.



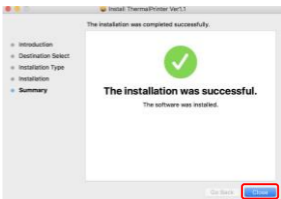
3. Click "Continue" button.

4. Click "Install".



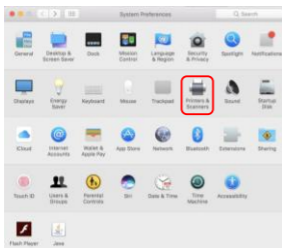
5. Use Touch ID or Enter your password.

6. Click "Close" to finish.



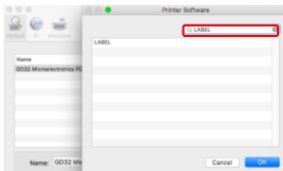
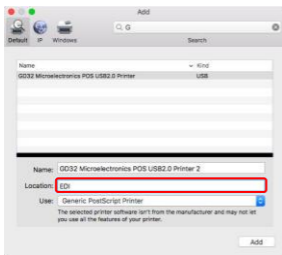
7. Open "System Preferences" and click "Printers and Scanners".

8. Click "+" to add a new printer.



9. Turn on your printer, and choose "LABEL", select "Select Software" under "Use" drop down menu.

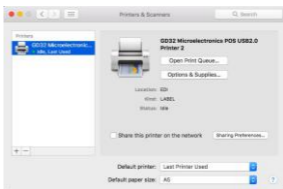
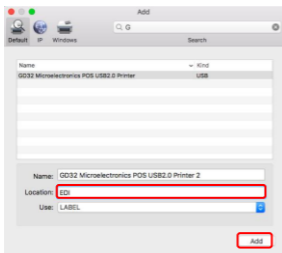
10. Input "LABEL" and choose "LABEL".



11. Click "Add".

12. Use Touch ID or enter your password.

13. Finish.



1.Label Calibration Method:

If the paper is skipping or continuous printing and not stopping, run printer calibration, as follows:

Put the paper into the printer and power on the printer, when the power light is on, press and hold the "FEED" button for 5-6 seconds, until the led light flashes and the buzzer beeps, then release the FEED button. After that, restart the printer and print a test label.

2.If the following case occurs after calibration:

With paper, but the printer reports error:

When this happens, take away the paper and power off the printer first, and then power on the printer, once the red light flashes then hold the "FEED" button immediately, release it when the red light flashes again and the buzzer beeps, after that, wait 2 seconds, then restart the printer and test it again.